

Be the change
you want
to see!



PRIME
TIME

HEAD START

Pioneers of Change

2024-2025 Annual Report





Table Of Contents

A Message From Our Director	2
Who We Are	3
Vision, Mission, and Values	4
Our Commitment	5
Service Area	6
Approach	
Long-Term Program Goals	10
Early Care & Education	11
Family Engagement	12
Health	13
Highlights	14
Community Partnerships	15
Our Team	16
Financials	19



A Message From Our Director

As we reflect on the 2024–2025 school year, we are proud to share the remarkable progress that our students have made this school year. Their remarkable gains on school readiness assessments are a testament to the dedication of our educators, the resilience of our families, and the strength of our community partnerships.

Throughout the year, Prime Time has continued to deepen its relationships within Lafayette and Iberia Parishes. These connections are the foundation of our mission—to foster environments where children thrive, families are empowered, and communities are strengthened. Our focus remains steadfast on achieving positive outcomes for children and families, closing the achievement gap, and building brighter futures. We believe every child deserves the opportunity to shine, and we are committed to creating spaces where that light can flourish.

Thank you for being part of this journey. Together, we are making a lasting impact.

Dena Thomas, Head Start Director



Who We Are

Prime Time is a subsidiary of the Louisiana Endowment for the Humanities (LEH), a statewide non-profit organization that provides cultural and educational programming for and with Louisiana residents. Prime Time was established in 1991 and offers a set of unique, humanities-focused, and outcomes-based programs designed to engage, support and educate underserved children and families. Through our family-focused programming, Prime Time aims to support communities in the development of children who are self-directed, self-motivated lifelong learners who are eager to absorb the world around them through literature, questioning/inquiry, and meaningful interactions with others.

Building on nearly 30 years of experience in implementing high-quality, high-impact family education and engagement programs, Prime Time provides Early Head Start (EHS) and Head Start (HS) programming with funding and support from the Office of Head Start. Our Early Head Start and Head Start programs integrate proven family engagement and inquiry-based teaching and learning strategies with its research-based classroom and family engagement curricula. Our Head Start programs are designed to engage parents/guardians as partners to ensure that students build basic skills, develop a love of literacy and hone critical-thinking abilities that will set the foundation for kindergarten readiness and lifelong learning.

Since January 2021, Prime Time has proudly served as an Early Head Start and Head Start provider in Iberia and Lafayette parishes (Acadiana). Through partnerships and community collaborations, Prime Time is funded to serve up to 635 Iberia Parish and Lafayette Parish students (499 Head Start and 136 Early Head Start), between the ages of six weeks and five years, and their families. This important work is implemented by a staff of trained professionals at Prime Time Head Start sites.



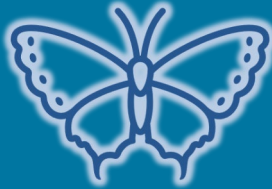
VALUES



EXCELLENCE



EQUITY



COURAGE



STEWARDSHIP



MISSION

To create the precondition
for future learning among
economically and
educationally
vulnerable families

VISION

Creating a literate society
where a quality humanities
education is accessible to all

Our Commitment

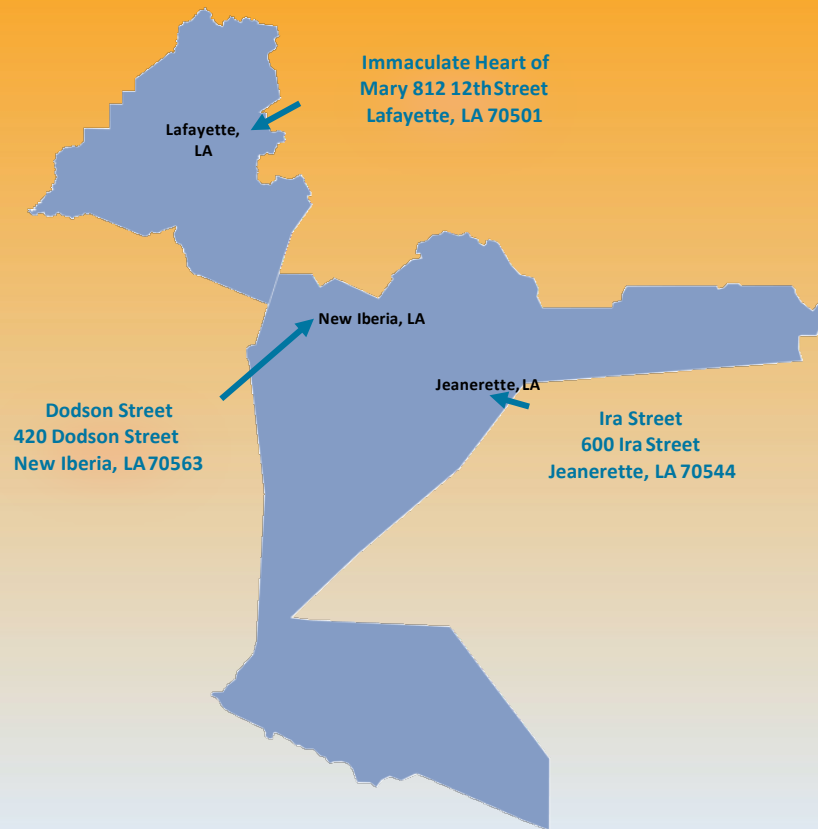
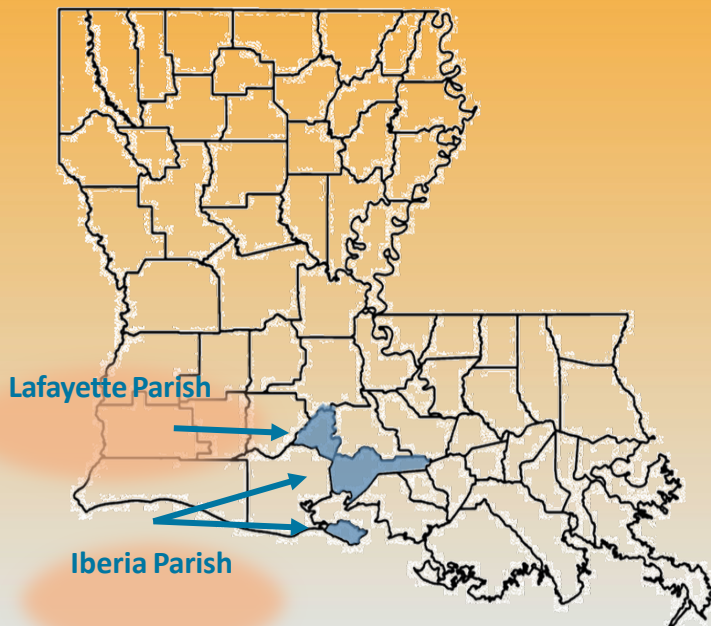
A leading provider of humanities-based family programs, Prime Time relies on its strength as a builder of effective partnerships.



By collaborating with local and national leaders in education and family engagement, Prime Time Head Start/Early Head Start works to bring a relentless focus on positive child and family outcomes to close the achievement gap and build a better future for children, families, and communities we are privileged to serve.



SERVICE AREA

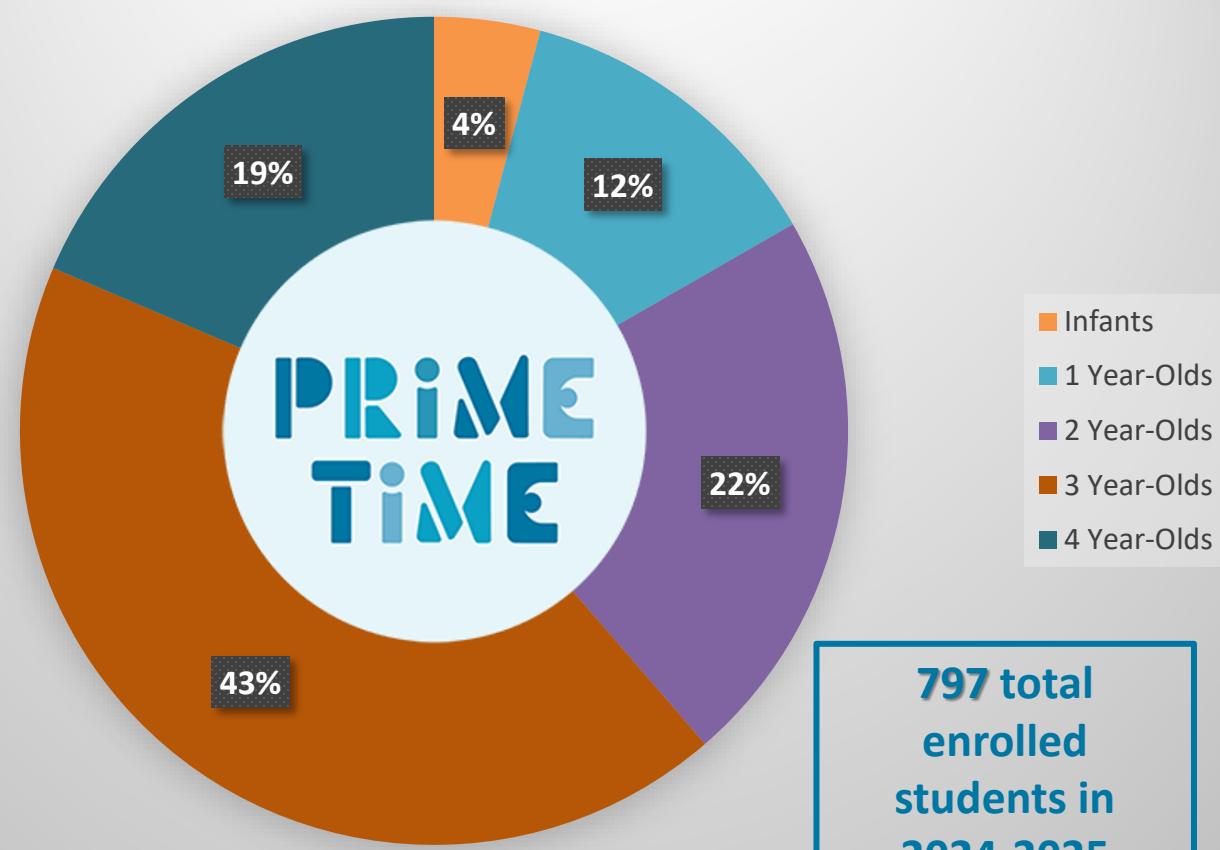


Acadiana, also known as the Cajun Country, is the official name given to the French Louisiana region that has historically contained much of the state's French-speaking population. Many inhabitants of the Cajun Country have Acadian ancestry and identify as Cajuns or Louisiana Creoles. Iberia and Lafayette parishes are among 22 parishes of similar culture that make up this region. Acadiana, as defined by the Louisiana legislature, refers to the area that stretches from just west of New Orleans to the Texas border along the Gulf of Mexico coast.



SERVICE AREA

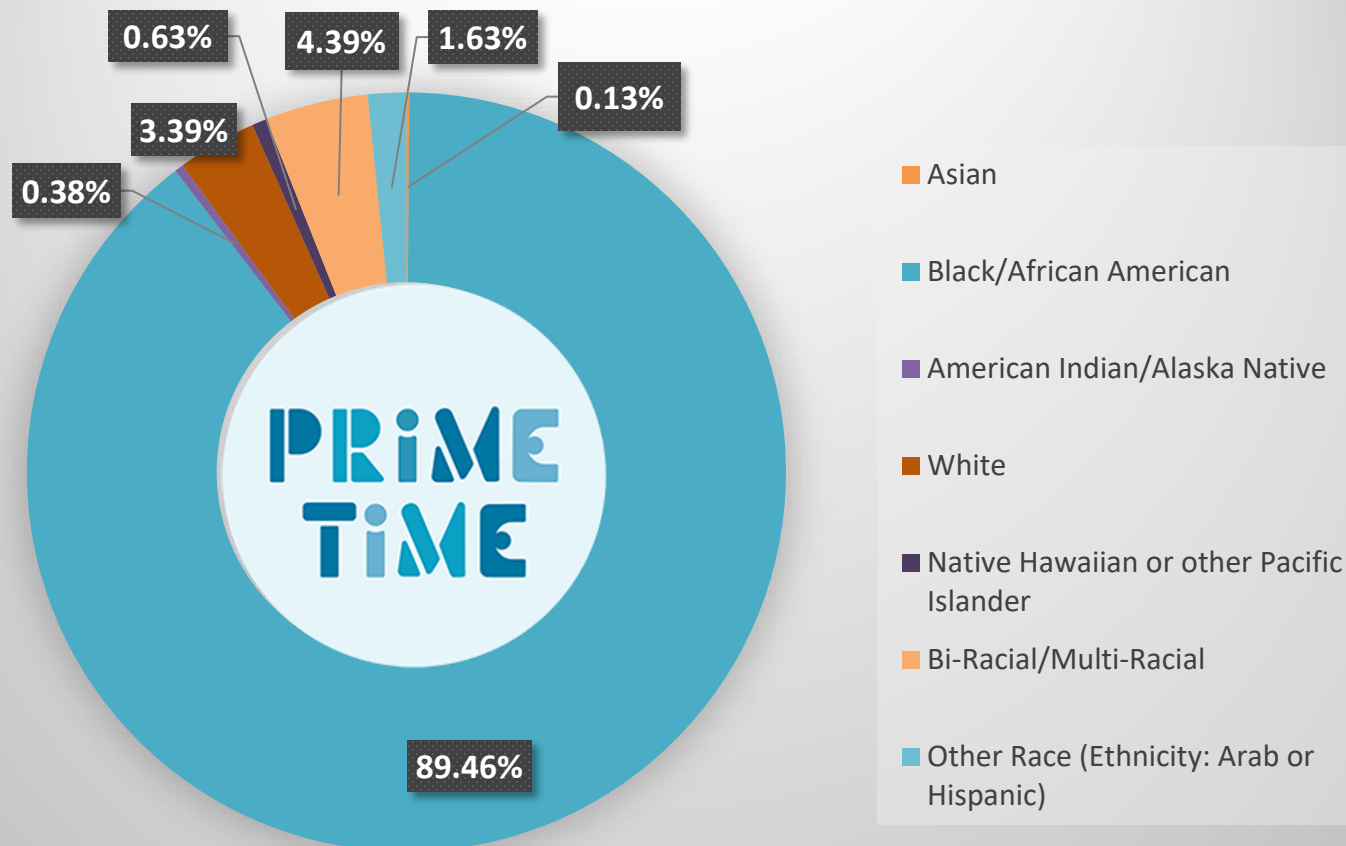
Students Served In 2024-2025



**797 total
enrolled
students in
2024-2025**

SERVICE AREA

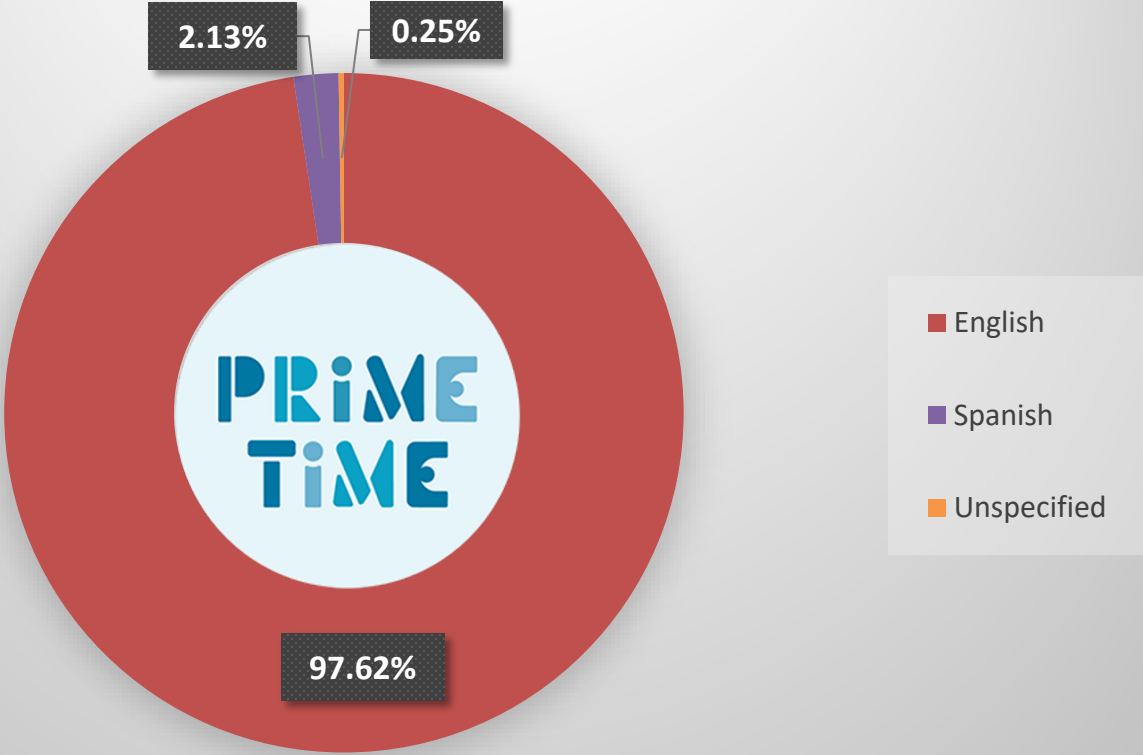
Student Race & Ethnicity In 2024-2025





SERVICE AREA

Student Primary Language Spoken At Home:
2024-2025



LONG-TERM PROGRAM GOALS & SCHOOL READINESS

1. Establish family and community partnerships to build social capital, encourage self-sufficiency, create a foundation for school readiness, and promote lifelong learning
2. Mobilize resources to build collaborative and innovative data-informed systems of accountability and excellence to promote continuous improvement, ensuring every stakeholder receives the support needed to achieve their goals and advance lifelong learning.



Prime Time is committed to ensuring that every student transitions from the Head Start program on a path to success in kindergarten. Our school readiness goals encompass all five domains of child development and learning, along with a *strategic focus:

Approaches to Learning

Social Emotional Development

Language and Literacy

Cognition

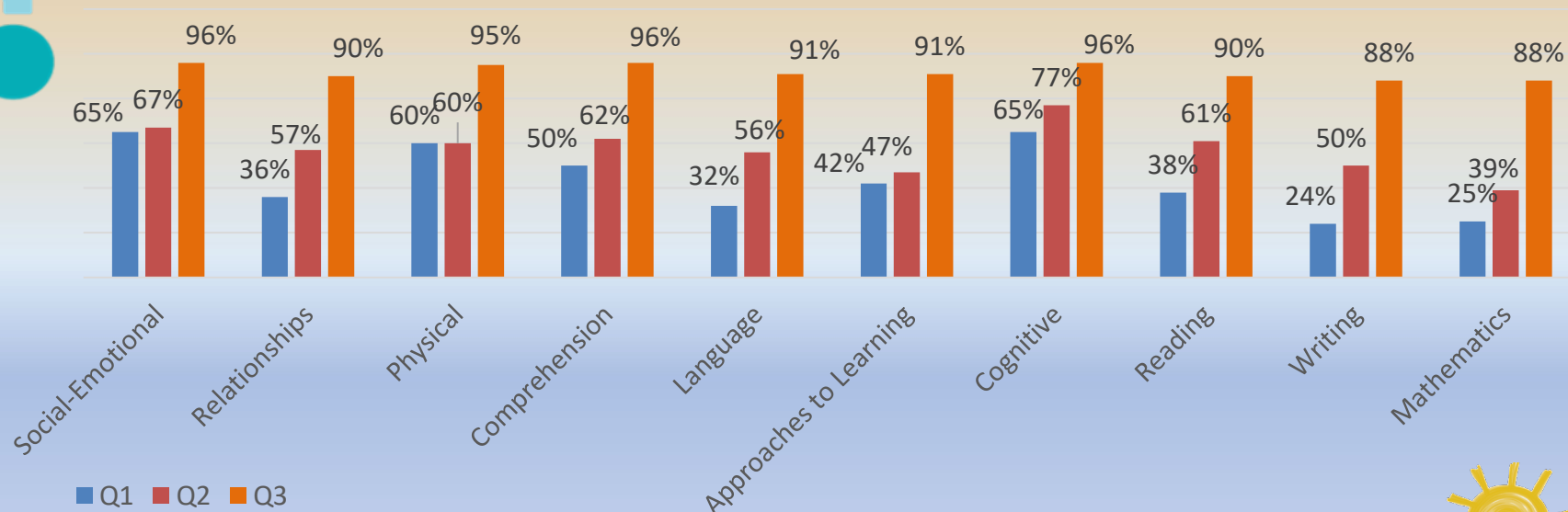
Perceptual, Motor, and Physical Development

*Arts and Humanities Approaches To Learning

EARLY CARE AND EDUCATION

Prime Time incorporates the use of Teaching Strategies GOLD® (TSG), an online, real-time system, used to collect and aggregate child outcomes data for Early Head Start and Head Start that helps individualize teaching for children and analyze our progress on meeting our goals. TSG is also used by most other preschools within Louisiana and allows for easy administration and individualization for children. The following chart shows student gains for the 2024-2025 school year as captured within TSG for Prime Time transitioning Head Start students:

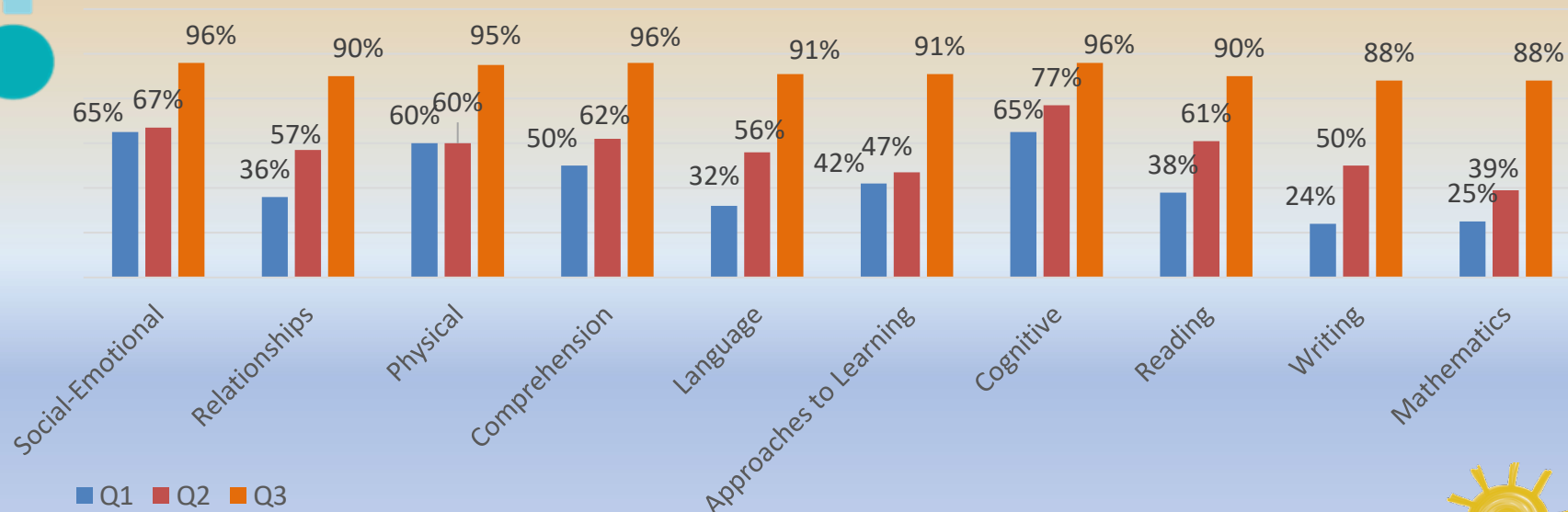
Progress Measure: At least 70% of Prime Time transitioning four-year old students will be on-target in each domain at Quarter 3 assessment (April 30, 2025).



EARLY CARE AND EDUCATION

Prime Time incorporates the use of Teaching Strategies GOLD® (TSG), an online, real-time system, used to collect and aggregate child outcomes data for Early Head Start and Head Start that helps individualize teaching for children and analyze our progress on meeting our goals. TSG is also used by most other preschools within Louisiana and allows for easy administration and individualization for children. The following chart shows student gains for the 2024-2025 school year as captured within TSG for Prime Time transitioning Head Start students:





Progress Measure: At least 70% of Prime Time transitioning four-year old students will be on-target in each domain at Quarter 3 assessment (April 30, 2025).



FAMILY ENGAGEMENT



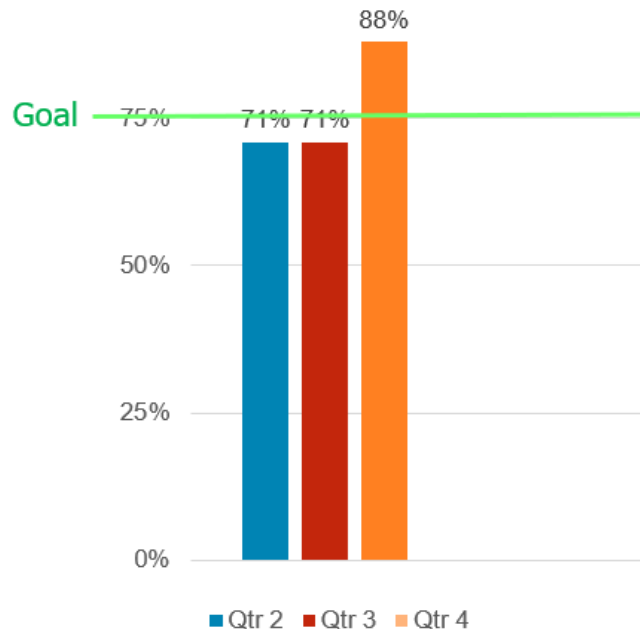
With guidance from our Policy Council and Family Engagement Network (FEN) parent participants, Prime Time exceeded our family engagement performance measure for 2024-2025. The target was that at least 25% of 530 families will engage in at least two family engagement strategies by the end of Q3 (April 2025). 55% were engaged in at least two.

Family Engagement							
Home Learning Logs		Reading		Family Engagement Networks		Family Engagement Networks	
	271 Families Engaged 56.7%		267 Families Engaged 55.9%		259 Families Engaged 54.2%		392 Families Engaged 82.0%
Total Hours Engaged	5,310.3	Total Hours Engaged	4,872.0	Total Events Attended	1,420	Total Events Attended	893
Of Families Participating..							
Average Total Hours per Family	19.6	Average Total Hours per Family	18.25	Average Number of Events per Family	5.48	Average Number of Events per Family	2.28
Average Monthly Hours per Family	4.68	Average Monthly Hours per Family	4.29	Average Monthly Events per Family	2.46	Average Monthly Events per Family	1
Families meeting Q3 12 hrs target	148	Families meeting Q3 10 hrs target	136	Families meeting Q3 2 total events target		290	

HEALTH



We set as a performance measure to have at least 75% of our children up-to-date on physicals, with evidence of consistent follow-up for children who are not by the end of Quarter Three (Q3); April 30, 2025. The following bar graph reflects and shows our progress at end of each quarter. Prime Time will continue to work on strategies for the upcoming program year to make sure we are meeting this goal through supports of our OHS program specialist and Training/Technical Assistance provided through the Office of Head Start.



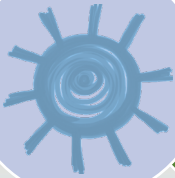
99% of our
2024-2025
students had a
medical home.



2024-2025 Highlights



On March 31, 2025, we received notice from the Office of Head Start (OHS) that our program was eligible for a non-competitive five year grant award to operate the Head Start program



This school year we met our goal of being fully enrolled with both Head Start Preschool and Early Head Start.



During the 2024-2025 school year, we expanded our Immaculate Heart of Mary site with the opening of the new wing; 5 Head Start classrooms. A new playground was installed at our Dodson site. New air conditioning units were installed at our Jeanerette site. Our new Holy Rosary site was licensed and set to open this fall.

2024-2025 Community Partnerships



- Diocese of Lafayette, Immaculate Heart of Mary Church
- Early Steps
- Healthy Iberia Coalition
- Iberia Bank/First Horizon Foundation
- Iberia Comprehensive Community Health Center, Inc.
- Iberia Parish School System
- Lafayette Council on Aging-Foster Grandparent Program
- Lafayette Junior League
- Lafayette Lions Club
- Lafayette Parish School System
- Louisiana Healthcare Connections
- LSU Ag Centers (Iberia and Lafayette)
- Nurse Family Partnership
- Pinhook Family Foundation
- Stuller Family Foundation
- SWLA
- The Family Tree
- Unitech Training Academy
- United Way of Acadiana Early Head Start
- Winters Mental Health and Consulting



Our Team

Policy Council Members 2024-2025:

Natasha Butler
Roxette Caldwell
Darika Hill
Parents, Dodson

Patrick Boutte
Brittany Fruge
Tashana Jones
Parents, Jeanerette

Sheneka Johnson
Jasmine Matthew
Tedra Sellers
Parents, IHM

Kenze Sims
Past Parent

Marlon Lewis
Community Rep., Iberia Parish

Clarence Clark
Community Rep., Lafayette Parish

Marie Leger
Community Rep., Lafayette Parish



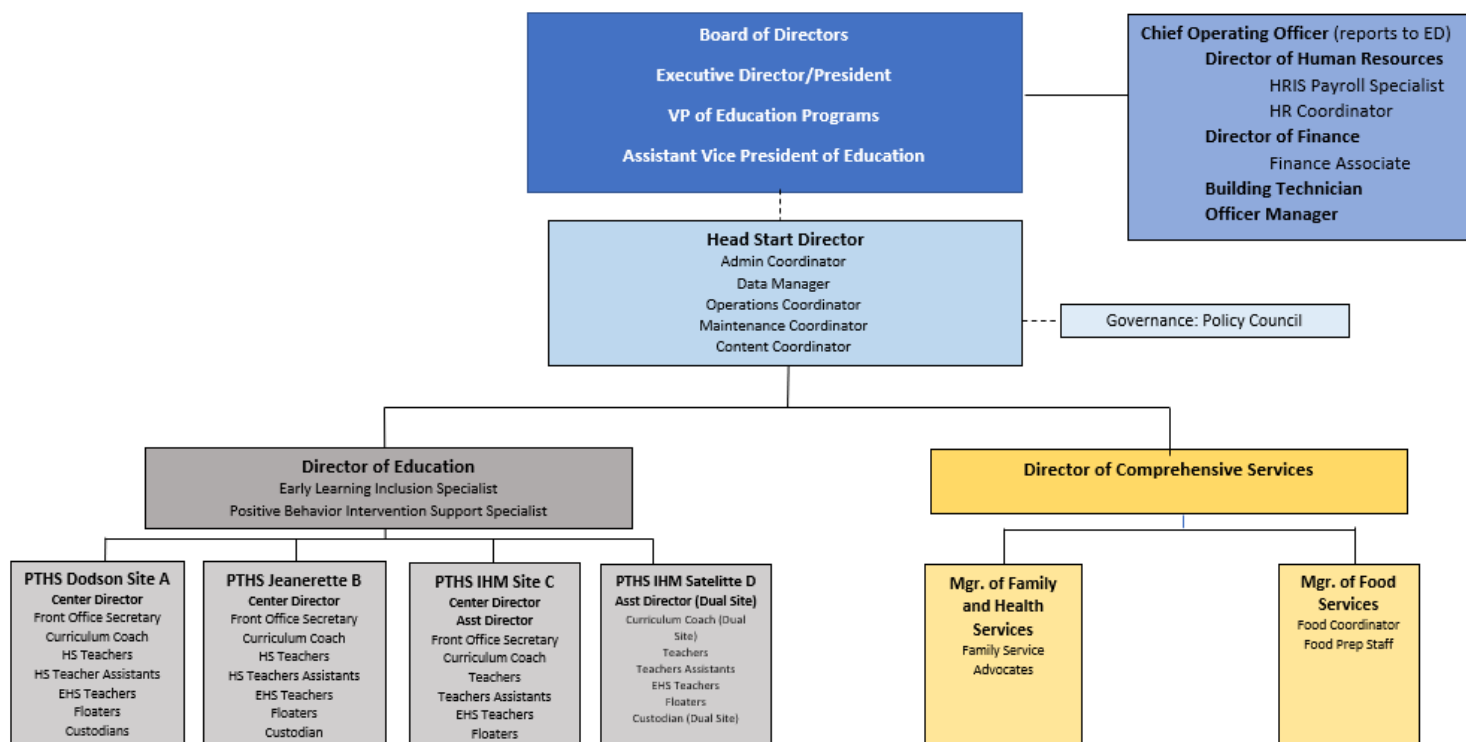
Education Committee Members:

Faye Flanagan
Holly Wilson
Sherry Guarisco
Laura Prisco
Randy Haynie
Stewart Ewing
Kathy Victorian
Natasha Butler



Our Team

Organization Chart



Our Team: Leadership

Sarah Withers	Vice President of Education
Angel Slater	Assistant Vice President of Education
Dena Thomas	Head Start Director
Candace Guy	Director of Comprehensive Services
Jenna Schaubert	Director of Education
Amanda Smith	Manager of Food Services
Faye Lee	Human Resources Coordinator
Finley Williams	Maintenance Coordinator
Jessica Okafor	Positive Behavior Intervention Support Specialist
Joanie Ledet	Data Manager and Tech Support
Krystle Brown	Administrative Coordinator
LaDon Freeman-Williams	Assistant Director: Immaculate Heart of Mary
Lakeidra St. Julien	Content Coordinator
Lesia Handy	Mgr. of Family Services & Health: Lafayette
Linell Jolivet	Mgr. of Family Services & Health: Iberia
Melissa Miller	Disability Specialist
Michelle Mamou	Center Director: Dodson
Pamela Benton	Operations Coordinator
Shameika Montgomery	Center Director: Immaculate Heart of Mary
Wilma Chretien	Center Director: Jeanerette



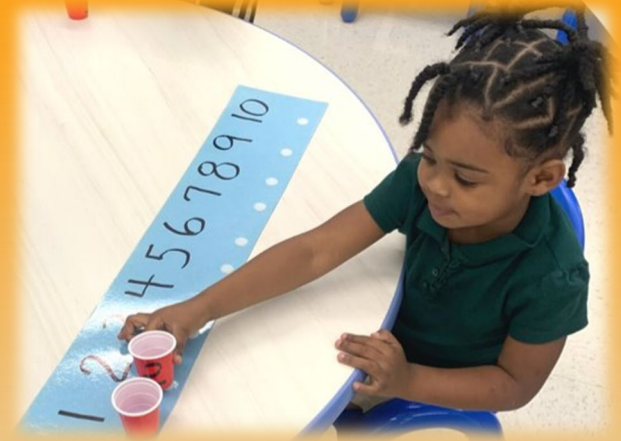


2024-2025 Financials

Funds Available	Head Start - Ops	Early Head Start - Ops	Head Start - TA	EHS - TA	Head Start Non-Fed	EHS Non-Fed	CACFP	Total (Federal + Match)	Overall Total (incl. external)
OHS Federal funds	\$ 7,459,219	\$ 2,297,388	\$ 83,891	\$ 41,249			\$ -	\$ 9,881,747	\$ 9,881,747
Non-Federal Match	\$ -	\$ -	\$ -	\$ -	\$ 1,885,778	\$ 584,660	\$ -	\$ 2,470,438	\$ 2,470,438
Other Funds (Not in Match)	\$ -	\$ -	\$ -	\$ -	\$ -	\$ -	\$ 650,415	\$ -	\$ 650,415
Total Funds Available	\$ 7,459,219	\$ 2,297,388	\$ 83,891	\$ 41,249	\$ 1,885,778	\$ 584,660	\$ 650,415	\$ 12,352,185	\$ 13,002,600

Expenses (424 Categories)	Head Start - Ops	Early Head Start - Ops	Head Start - TA	EHS - TA	Head Start Non-Fed	EHS Non- Fed	CACFP	Total (Federal + Match)	Overall Total (incl. external)
Personnel - Base Pay	\$ 4,330,480	\$ 1,608,850	\$ -	\$ -	\$ -	\$ -	\$ -	\$ 5,939,330	\$ 5,939,330
Personnel - Fringe	\$ 866,095	\$ 321,769	\$ -	\$ -	\$ -	\$ -	\$ -	\$ 1,187,864	\$ 1,187,864
Travel	\$ -	\$ -	\$ 3,352	\$ 1,648	\$ -	\$ -	\$ -	\$ 5,000	\$ 5,000
Equipment	\$ 4,750	\$ 250	\$ -	\$ -	\$ -	\$ -	\$ -	\$ 5,000	\$ 5,000
Supplies	\$ 430,535	\$ 55,130	\$ -	\$ -	\$ -	\$ -	\$ 650,415	\$ 485,665	\$ 1,136,080
Contractual	\$ 427,624	\$ 20,501	\$ -	\$ -	\$ -	\$ -	\$ -	\$ 448,125	\$ 448,125
Construction	\$ -	\$ -	\$ -	\$ -	\$ -	\$ -	\$ -	\$ -	\$ -
Other	\$ 725,734	\$ 83,153	\$ 73,826	\$ 36,300	\$ 1,885,778	\$ 584,660	\$ -	\$ 3,389,451	\$ 3,389,451
Indirect Costs	\$ 674,001	\$ 207,735	\$ 6,713	\$ 3,301	\$ -	\$ -	\$ -	\$ 891,750	\$ 891,750
Total Expenses	\$ 7,459,219	\$ 2,297,388	\$ 83,891	\$ 41,249	\$ 1,885,778	\$ 584,660	\$ 650,415	\$ 12,352,185	\$ 13,002,600
Funding	\$ 7,459,219	\$ 2,297,388	\$ 83,891	\$ 41,249	\$ 1,885,778	\$ 584,660	\$ 650,415	\$ 12,352,185	\$ 13,002,600

2025-2026 Proposed Financials



Funds Available	Head Start - Ops	Early Head Start - Ops	Head Start - TA	EHS - TA	Head Start Non-Fed	EHS Non-Fed	CACFP	Overall Total (incl. external)
OHS Federal funds	\$ 7,459,219	\$ 2,297,388	\$ 83,891	\$ 41,249			\$ -	\$ 9,881,747
Non-Federal Match	\$ -	\$ -	\$ -	\$ -	\$ 1,885,778	\$ 584,660	\$ -	\$ 2,470,438
Other Funds (Not in Match)	\$ -	\$ -	\$ -	\$ -	\$ -	\$ -	\$ 650,415	\$ 650,415
Total Funds Available	\$ 7,459,219	\$ 2,297,388	\$ 83,891	\$ 41,249	\$ 1,885,778	\$ 584,660	\$ 650,415	\$ 13,002,600

Expenses (424 Categories)	Head Start - Ops	Early Head Start - Ops	Head Start - TA	EHS - TA	Head Start Non-Fed	EHS Non-Fed	CACFP	Overall Total (incl. external)
Personnel - Base Pay	\$ 4,279,188	\$ 1,609,968	\$ -	\$ -	\$ -	\$ -	\$ -	\$ 5,889,156
Personnel - Fringe	\$ 855,838	\$ 321,993	\$ -	\$ -	\$ -	\$ -	\$ -	\$ 1,177,831
Travel	\$ -	\$ -	\$ 2,105	\$ 1,035	\$ -	\$ -	\$ -	\$ 3,140
Supplies	\$ 425,860	\$ 59,020	\$ -	\$ -	\$ -	\$ -	\$ 650,415	\$ 1,135,295
Contractual	\$ 453,469	\$ 23,156	\$ -	\$ -	\$ -	\$ -	\$ -	\$ 476,625
Other	\$ 771,712	\$ 74,501	\$ 75,073	\$ 36,913	\$ 1,885,778	\$ 584,660	\$ -	\$ 3,428,637
Indirect Costs	\$ 673,152	\$ 208,750	\$ 6,713	\$ 3,301	\$ -	\$ -	\$ -	\$ 891,916
Total Expenses	\$ 7,459,219	\$ 2,297,388	\$ 83,891	\$ 41,249	\$ 1,885,778	\$ 584,660	\$ 650,415	\$ 13,002,600

PRIME TIME

HEAD START

Dodson Site
420 Dodson Street New
Iberia, LA 70563 337-376-
2840

Jeanerette Site 600
Ira Street
Jeanerette, LA 70544
337-579-2070

Immaculate Heart of Mary Site 812
12th Street
Lafayette, LA 70501
337-321-8044

Holy Rosary (Opening August 2025)
421 ½ Carmel Drive
Lafayette, LA 70509
337-381-0267

www.primetimefamily.org

