

PRIME TIME

HEAD START



2023-2024 Annual Report

Focusing on students,
families, and the
communities we
serve!



PRIME TIME

HEAD START

At Prime Time, we keep
our students, families, and
communities in

F.O.C.U.S as we:

F: Fulfill our mission and vision

O: Operate with excellence

C: Create a culture of purpose

U: Unite with compassion

S: Support those we are
privileged to serve





Table Of Contents

A Message From Our Director	2
Who We Are	3
Vision, Mission, and Values	4
Our Commitment	5
Service Area	6
Approach	
Long-Term Program Goals	10
Early Care & Education	11
Family Engagement	12
Health	13
Sunlight Highlights	14
Community Partnerships	15
Our Team	16
Financials	19

A Message From Our Director

During the 2023-2024 school year, our students showed exceptional gains on their school readiness assessments and Winters Mental Health Consulting began providing services to our Head Start centers. As we continue to build lasting relationships within Lafayette and Iberia Parishes, Prime Time remains focused on the importance of positive child and family outcomes, closing the achievement gap, and building better futures for our children, families, and communities we serve. It is our goal to create environments where children thrive and let their light shine.

Thank you for your support as Prime Time provides top-notch Early Head Start and Head Start services and as we help ensure our children are kindergarten ready!

Dena Thomas, Head Start Director



Who We Are

Prime Time is a subsidiary of the Louisiana Endowment for the Humanities (LEH), a statewide non-profit organization that provides cultural and educational programming for and with Louisiana residents. Prime Time was established in 1991 and offers a set of unique, humanities-focused, and outcomes-based programs designed to engage, support and educate underserved children and families. Through our family-focused programming, Prime Time aims to support communities in the development of children who are self-directed, self-motivated lifelong learners who are eager to absorb the world around them through literature, questioning/inquiry, and meaningful interactions with others.

Building on nearly 30 years of experience in implementing high-quality, high-impact family education and engagement programs, Prime Time provides Early Head Start (EHS) and Head Start (HS) programming with funding and support from the Office of Head Start. Our Early Head Start and Head Start programs integrate proven family engagement and inquiry-based teaching and learning strategies with its research-based classroom and family engagement curricula. Our Head Start programs are designed to engage parents/guardians as partners to ensure that students build basic skills, develop a love of literacy and hone critical-thinking abilities that will set the foundation for kindergarten readiness and lifelong learning.

Since January 2021, Prime Time has proudly served as an Early Head Start and Head Start provider in Iberia and Lafayette parishes (Acadiana). Through partnerships and community collaborations, Prime Time is funded to serve up to 635 Iberia Parish and Lafayette Parish students (499 Head Start and 136 Early Head Start), between the ages of six weeks and five years, and their families. This important work is implemented by a staff of trained professionals at Prime Time Head Start sites.



VALUES



MISSION

To create the precondition
for future learning among
economically and
educationally
vulnerable families

VISION

Creating a literate society
where a quality humanities
education is accessible to all

Our Commitment

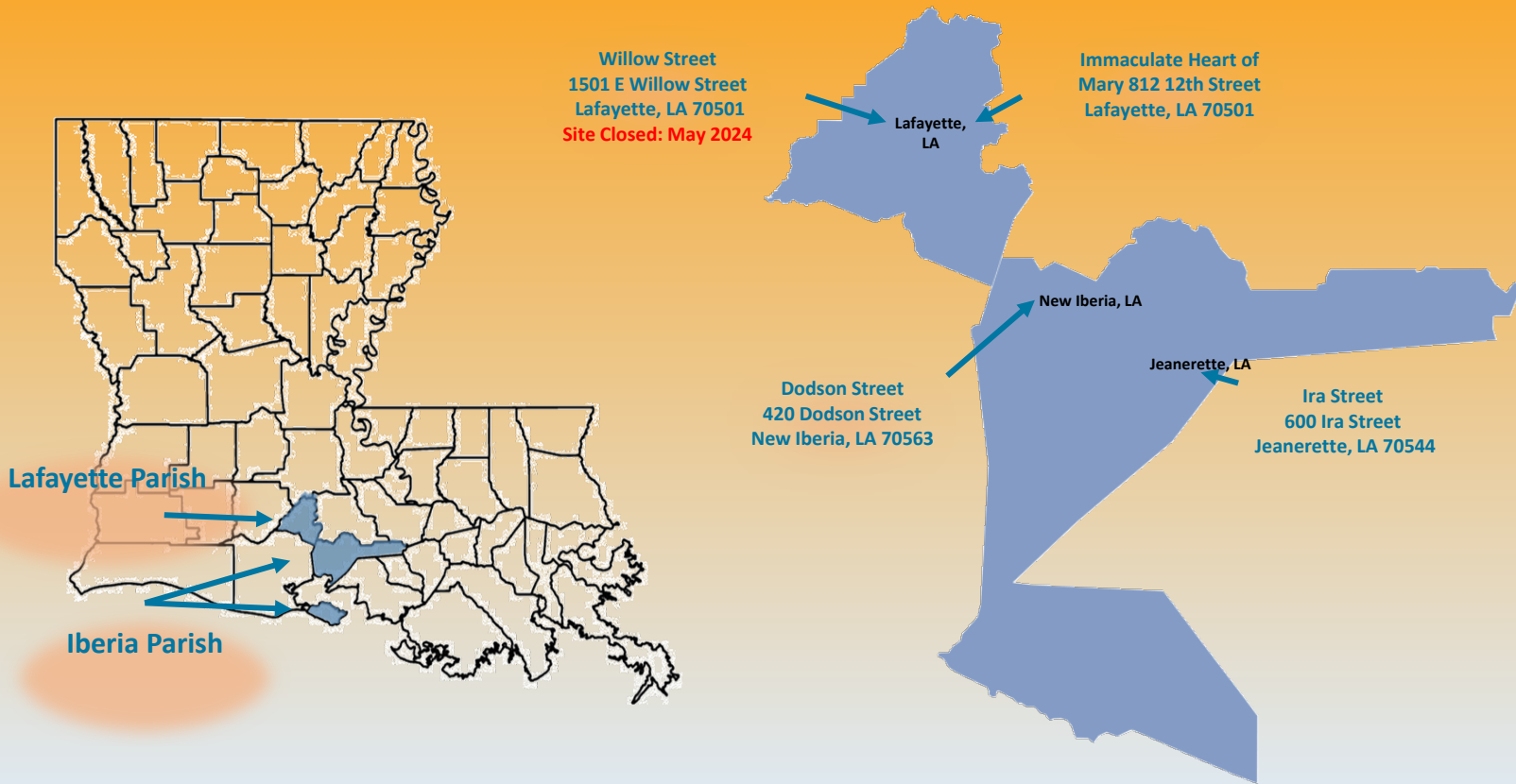
A leading provider of humanities-based, family programs, Prime Time relies on its strength as a builder of effective partnerships.



By collaborating with local and national leaders in education and family engagement, Prime Time Head Start/Early Head Start works to bring a relentless focus on positive child and family outcomes to close the achievement gap and build a better future for children, families, and communities we are privileged to serve.



SERVICE AREA

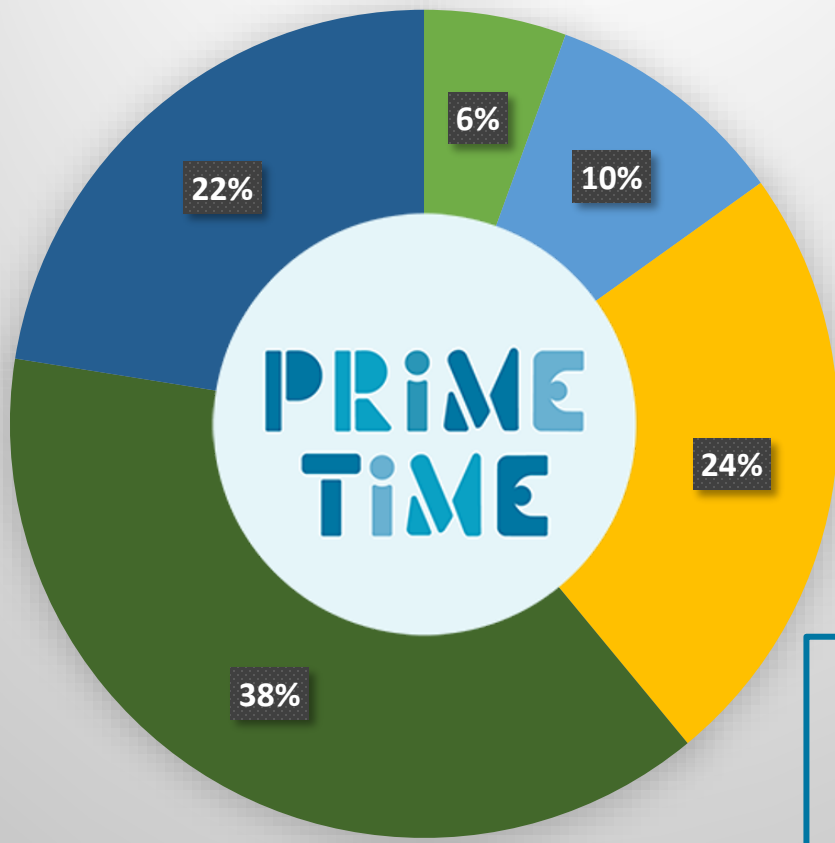


Acadiana, also known as the Cajun Country, is the official name given to the French Louisiana region that has historically contained much of the state's French-speaking population. Many inhabitants of the Cajun Country have Acadian ancestry and identify as Cajuns or Louisiana Creoles. Iberia and Lafayette parishes are among 22 parishes of similar culture that make up this region. Acadiana, as defined by the Louisiana legislature, refers to the area that stretches from just west of New Orleans to the Texas border along the Gulf of Mexico coast.



SERVICE AREA

Students Served In 2023-2024

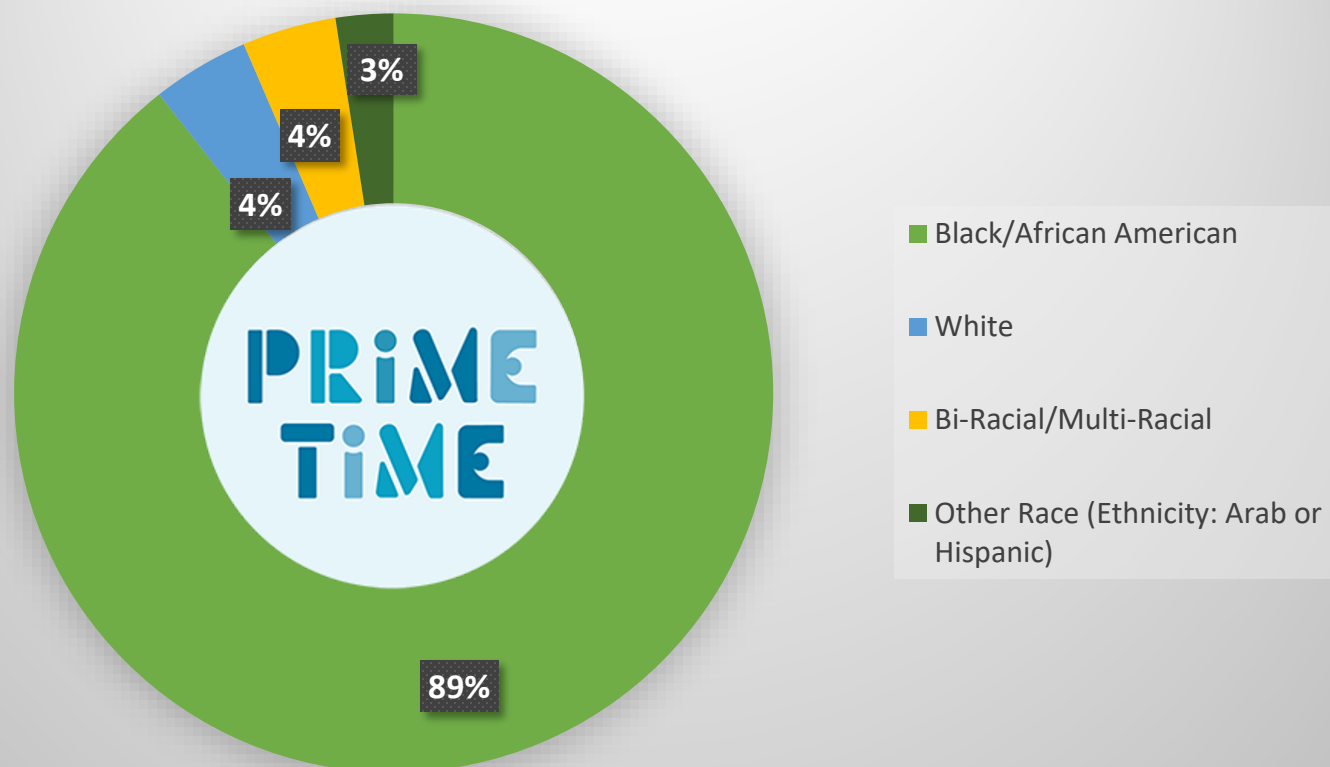


- Infants
- 1 Year-Olds
- 2 Year-Olds
- 3 Year-Olds
- 4 Year-Olds

**Cumulative
Enrollment
2023-2024**
774

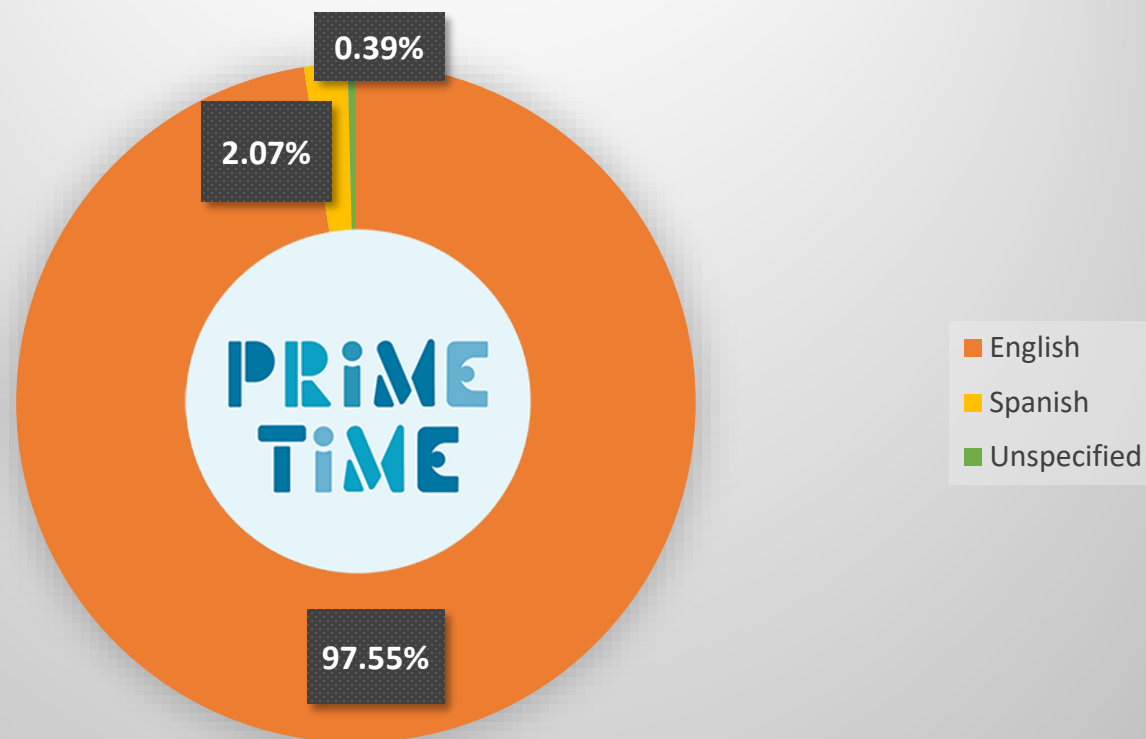
SERVICE AREA

Student Race & Ethnicity In 2023-2024



SERVICE AREA

Student Primary Language Spoken At Home: 2023-2024



LONG-TERM PROGRAM GOALS & SCHOOL READINESS

1. Establish family and community partnerships to build social capital, encourage self-sufficiency, create a foundation for school readiness, and promote lifelong learning
2. Mobilize resources to build collaborative and innovative data-informed systems of accountability and excellence to promote continuous improvement, ensuring every stakeholder receives the support needed to achieve their goals and advance lifelong learning.



Prime Time is committed to ensuring that every student transitions from the Head Start program on a path to success in kindergarten. Our school readiness goals encompass all five domains of child development and learning, along with a *strategic focus:

Approaches to Learning

Social Emotional Development

Language and Literacy

Cognition

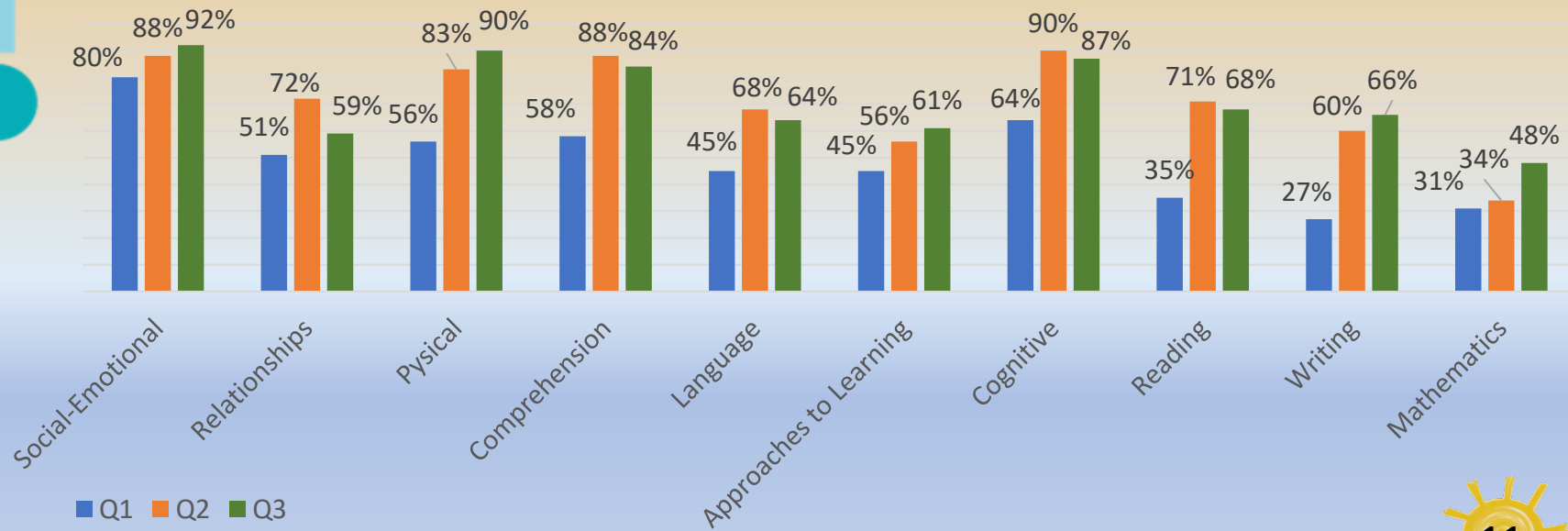
Perceptual, Motor, and Physical Development

*Arts and Humanities Approaches To Learning

EARLY CARE AND EDUCATION

Prime Time incorporates the use of Teaching Strategies GOLD® (TSG), an online, real-time system, used to collect and aggregate child outcomes data for Early Head Start and Head Start that helps individualize teaching for children and analyze our progress on meeting our goals. TSG is also used by most other preschools within Louisiana and allows for easy administration and individualization for children. The following chart shows student gains for the 2023-2024 school year as captured within TSG for Prime Time transitioning Head Start students:

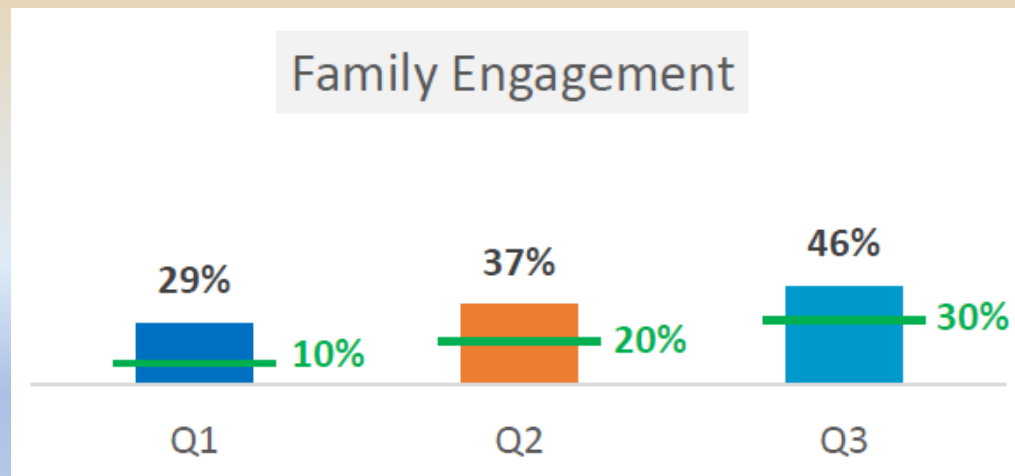
Progress Measure: At least 70% of Prime Time transitioning four-year old students will be on-target in each domain at Quarter 3 assessment (April 2024).





FAMILY ENGAGEMENT

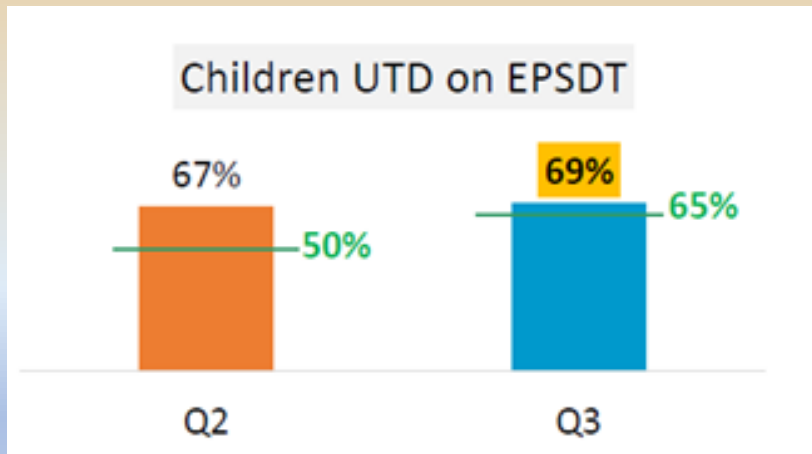
With guidance from our Policy Council and Family Engagement Network (FEN) parent participants, Prime Time exceeded our family engagement performance measure for 2023-2024. The target was that at least 30% of 571 families will engage in at least one family engagement strategy by the end of Q3 (April 2024). The following bar graph shows our progression toward this target each quarter and that we exceeded the target by 16%:



HEALTH



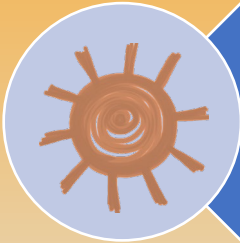
We set as a performance measure to have at least 65% of our children up-to-date on physicals, with evidence of consistent follow-up for children who are not by the end of Quarter Three (Q3); April 30, 2024. The following bar graph reflects and shows our progress at end of Q3. Prime Time is strategies for the upcoming program year to make sure we are meeting this goal through supports of our OHS program specialist and Training/Technical Assistance provided through the Office of Head Start.



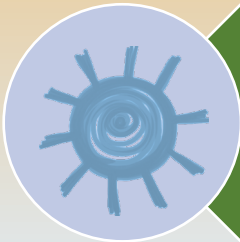
99% of our
2023-2024
students had a
medical home.



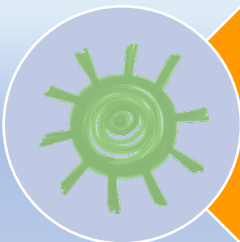
2023-2024 Highlights



From January 29, 2024 to February 2, 2024, the Administration for Children and Families (ACF) conducted a Focus Area Two (FA2) monitoring review of Prime Time Head Start and Early Head Start programs. Upon conclusion of the review, strong practices were noted for recruitment and attendance.



Office of Head Start conducted CLASS observations from 3/6/2024-4/29/2024. Prime Time scored above the competitive threshold in Emotional Support, Classroom Organization, and Instructional Support for Office of Head Start and scored above the quality threshold in Emotional Support and Classroom Organization.



During the 2023-2024 school year, we expanded our Immaculate Heart of Mary site that included adding Early Head Start seats to this location. The expansion of Immaculate Heart campus also created additional space for us to close our temporary site at Willow.

2023-2024 Community Partnerships



- Diocese of Lafayette, Immaculate Heart of Mary Church
- Early Steps
- Healthy Iberia Coalition
- Iberia Bank/First Horizon Foundation
- Iberia Comprehensive Community Health Center, Inc.
- Iberia Parish School System
- Lafayette Council on Aging-Foster Grandparent Program
- Lafayette Junior League
- Lafayette Lions Club
- Lafayette Parish School System
- Louisiana Healthcare Connections
- LSU Ag Centers (Iberia and Lafayette)
- Nurse Family Partnership
- Pinhook Family Foundation
- Stuller Family Foundation
- SWLA
- The Family Tree
- Unitech Training Academy
- United Way of Acadiana Early Head Start
- Winters Mental Health and Consulting



Our Team

Policy Council Members:

Cleveland Latulas

Parent, Dodson

Kaylia Steward

Parent, Dodson

Brittany Fruge

Parent, Jeanerette

Tashana Jones

Parent, Jeanerette

Bobbie Meeks

Parent, Willow

Kenze Sims

Parent, Willow

Jasmine Matthew

Parent, IHM

Octavionna Clark

Parent, IHM

Laure Anthony

Past Chair, Dodson

Marlon Lewis

Community Rep., Iberia Parish

Clarence Clark

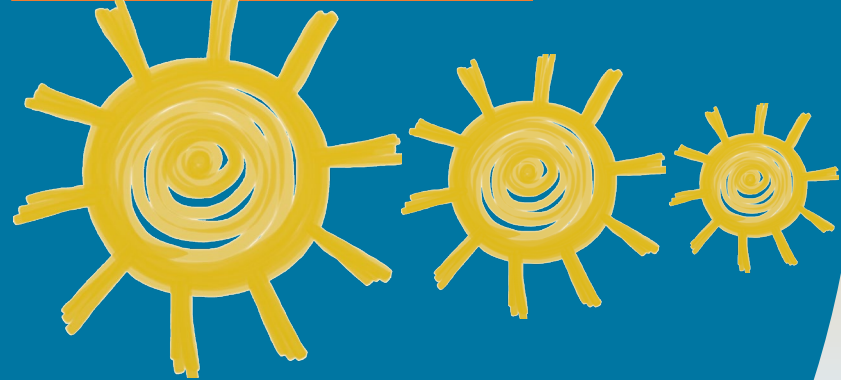
Community Rep., Lafayette Parish

Kimberly Chretien

Community Rep., Lafayette Parish

Marie Leger

Community Rep., Lafayette Parish



Education Committee Members:

Faye Flanagan

Holly Wilson

Sherry Guarisco

Laura Prisco

Randy Haynie

Stewart Ewing

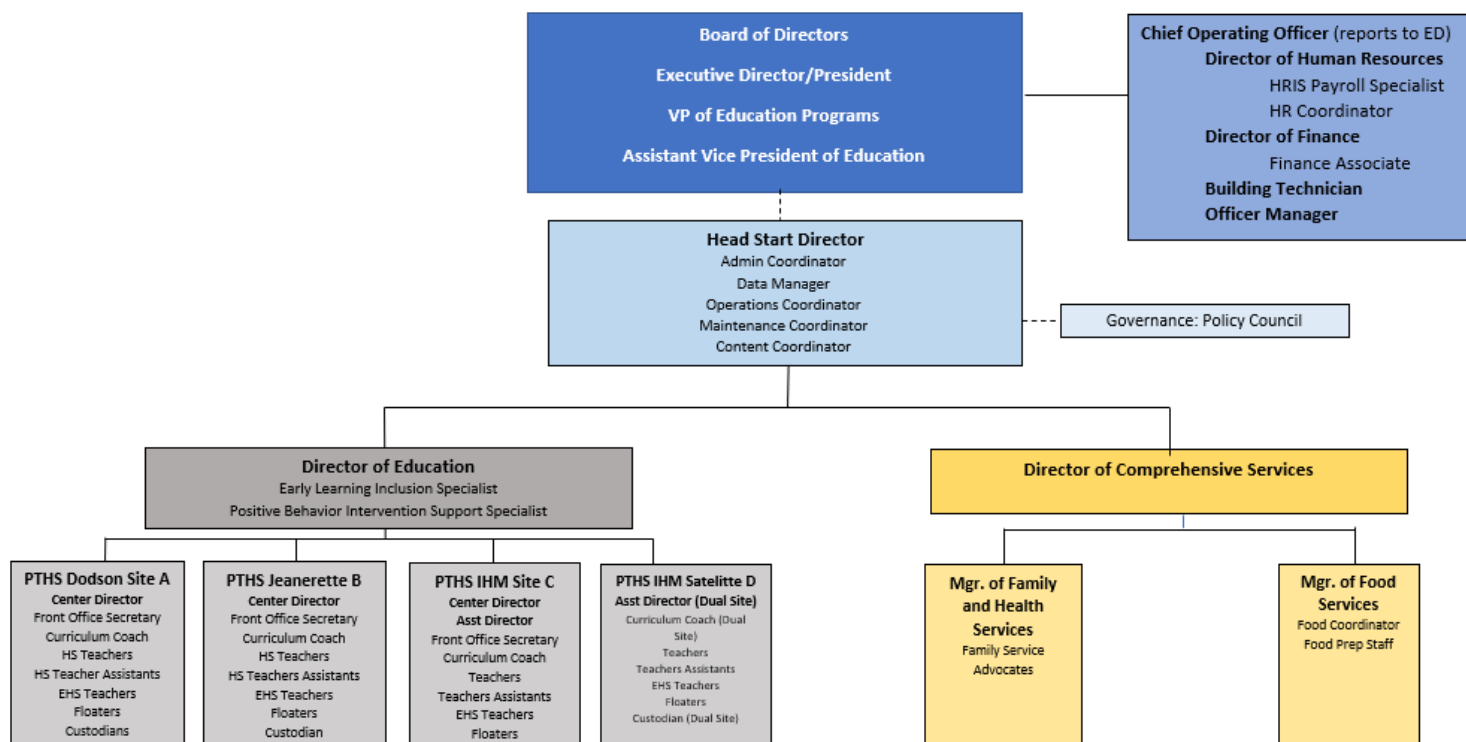
Melinda Mintz

Kathy Victorian



Our Team

Organization Chart



Our Team: Leadership

Sarah Withers	Vice President of Education
Angel Slater	Assistant Vice President of Education
Dena Thomas	Head Start Director
Jenna Schaubert	Director of Education
Candace Guy	Director of Comprehensive Services
Shameika Montgomery	Center Director: Immaculate Heart of Mary
LaDon Freeman-Williams	Lafayette Mgr. of Family Services & Health
Lesia Handy	Iberia Mgr. of Family Services & Health
Amanda Smith	Manager of Food Services
Joanie Ledet	Data Manager
Melissa Miller	Early Learning Inclusion Specialist
Faye Lee	Human Resources Coordinator
Claudette Lewis	Administrative Coordinator
Wilma Chretien	Center Director: Jeanerette
Lakeidra St. Julien	Content Coordinator
Juliana Savoy	Food Services Coordinator
Pamela Benton	Operations Coordinator
Finley Williams	Maintenance Coordinator
Marseia Boyance	Center Director: Dodson
Jessica Okafor	Positive Behavior Intervention Support Specialist





2023-2024 Financials

Funds Available	Head Start - Ops	Early Head Start - Ops	Head Start - TA	EHS - TA	CACFP	Total (Federal + Match)	Overall Total (incl. external)
OHS Federal funds	\$ 7,780,784	\$ 1,751,807	\$ 89,121	\$ 36,019	\$ -	\$ 9,657,731	\$ 9,657,731
Non-Federal Match	\$ -	\$ -	\$ -	\$ -	\$ -	\$ 2,414,433	\$ 2,414,433
Other Funds (Not in Match)	\$ -	\$ -	\$ -	\$ -	\$ 592,317	\$ -	\$ 592,317
Total Funds Available	\$ 7,780,784	\$ 1,751,807	\$ 89,121	\$ 36,019	\$ 592,317	\$ 12,072,164	\$ 12,664,481
Expenses (424 Categories)	Head Start - Ops	Early Head Start - Ops	Head Start - TA	EHS - TA	CACFP	Total (Federal + Match)	Overall Total (incl. external)
Personnel - Base Pay	\$ 4,613,314	\$ 1,155,594	\$ -	\$ -	\$ -	\$ 5,768,908	\$ 5,768,908
Personnel - Fringe	\$ 922,664	\$ 231,119	\$ -	\$ -	\$ -	\$ 1,153,783	\$ 1,153,783
Travel	\$ -	\$ -	\$ 3,561	\$ 1,439	\$ -	\$ 5,000	\$ 5,000
Equipment	\$ -	\$ -	\$ -	\$ -	\$ -	\$ -	\$ -
Supplies	\$ 388,292	\$ 41,788	\$ -	\$ -	\$ 592,317	\$ 430,080	\$ 1,022,397
Contractual	\$ 375,770	\$ 48,230	\$ -	\$ -	\$ -	\$ 424,000	\$ 424,000
Construction	\$ -	\$ -	\$ -	\$ -	\$ -	\$ -	\$ -
Other	\$ 772,929	\$ 113,781	\$ 85,560	\$ 34,580	\$ -	\$ 3,421,283	\$ 3,421,283
<u>Indirect Costs</u>	<u>\$ 707,815</u>	<u>\$ 161,295</u>	<u>\$ -</u>	<u>\$ -</u>	<u>\$ -</u>	<u>\$ 869,110</u>	<u>\$ 869,110</u>
Total Expenses	\$ 7,780,784	\$ 1,751,807	\$ 89,121	\$ 36,019	\$ 592,317	\$ 12,072,164	\$ 12,664,481
Funding	\$ 7,780,784	\$ 1,751,807	\$ 89,121	\$ 36,019	\$ 592,317	\$ 12,072,164	\$ 12,664,481

2024-2025 Proposed Financial



Funds Available	Head Start - Ops	Early Head Start - Ops	Head Start - TA	EHS - TA	Head Start Non-Fed	EHS Non-Fed	CACFP	Total (Federal + Match)	Overall Total (incl. external)
OHS Federal funds	\$ 7,459,219	\$ 2,297,388	\$ 83,891	\$ 41,249			\$ -	\$ 9,881,747	\$ 9,881,74
Non-Federal Match	\$ -	\$ -	\$ -	\$ -	\$ 1,885,778	\$ 584,660	\$ -	\$ 2,470,438	\$ 2,470,43
Other Funds (Not in Match)	\$ -	\$ -	\$ -	\$ -	\$ -	\$ -	\$ 650,415	\$ -	\$ 650,41
Total Funds Available	\$ 7,459,219	\$ 2,297,388	\$ 83,891	\$ 41,249	\$ 1,885,778	\$ 584,660	\$ 650,415	\$ 12,352,185	\$ 13,002,60
Expenses (424 Categories)	Head Start - Ops	Early Head Start - Ops	Head Start - TA	EHS - TA	Head Start Non-Fed	EHS Non- Fed	CACFP	Total (Federal + Match)	Overall Total (incl. external)
Personnel - Base Pay	\$ 4,330,480	\$ 1,608,850	\$ -	\$ -	\$ -	\$ -	\$ -	\$ 5,939,330	\$ 5,939,33
Personnel - Fringe	\$ 866,095	\$ 321,769	\$ -	\$ -	\$ -	\$ -	\$ -	\$ 1,187,864	\$ 1,187,86
Travel	\$ -	\$ -	\$ 3,352	\$ 1,648	\$ -	\$ -	\$ -	\$ 5,000	\$ 5,00
Equipment	\$ 4,750	\$ 250	\$ -	\$ -	\$ -	\$ -	\$ -	\$ 5,000	\$ 5,00
Supplies	\$ 430,535	\$ 55,130	\$ -	\$ -	\$ -	\$ -	\$ 650,415	\$ 485,665	\$ 1,136,08
Contractual	\$ 463,320	\$ 8,276	\$ -	\$ -	\$ -	\$ -	\$ -	\$ 471,596	\$ 471,59
Construction	\$ -	\$ -	\$ -	\$ -	\$ -	\$ -	\$ -	\$ -	\$ -
Other	\$ 690,038	\$ 95,378	\$ 73,826	\$ 36,300	\$ 1,885,778	\$ 584,660	\$ -	\$ 3,365,980	\$ 3,365,98
Indirect Costs	\$ 674,001	\$ 207,735	\$ 6,713	\$ 3,301	\$ -	\$ -	\$ -	\$ 891,750	\$ 891,75
Total Expenses	\$ 7,459,219	\$ 2,297,388	\$ 83,891	\$ 41,249	\$ 1,885,778	\$ 584,660	\$ 650,415	\$ 12,352,185	\$ 13,002,60
Funding	\$ 7,459,219	\$ 2,297,388	\$ 83,891	\$ 41,249	\$ 1,885,778	\$ 584,660	\$ 650,415	\$ 12,352,185	\$ 13,002,60



PRIME TIME

HEAD START

Willow Site
1501 E Willow Street
Lafayette, LA 70501
(Site closed: May 2024)

Dodson Site
420 Dodson Street
New Iberia, LA 70563
337-376-2840

Jeanerette Site
600 Ira Street
Jeanerette, LA 70544
337-579-2070

Immaculate Heart of Mary Site
812 12th Street
Lafayette, LA 70501
337-321-8044

www.primetimefamily.org

